

How to Find the MAC Address on a Mobile Device

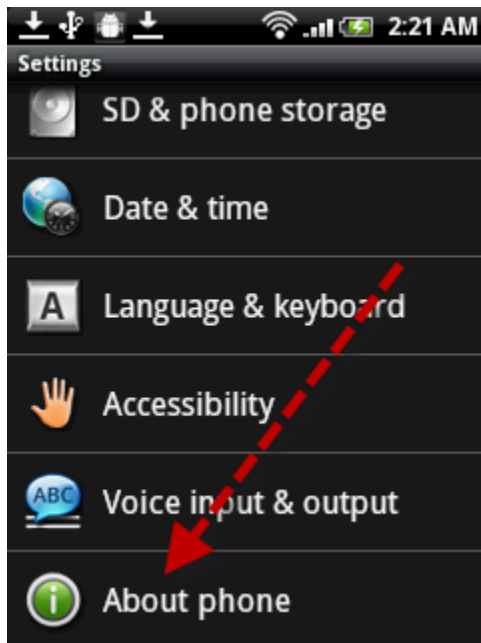
Use this document to discover the steps to locate the MAC address on a device. The devices are listed in alphabetical order.

1. Android Mobile Phones (These instructions should work on most Android based phones) - <http://www.theitechblog.com/1646/mac-address-android-mobile/>

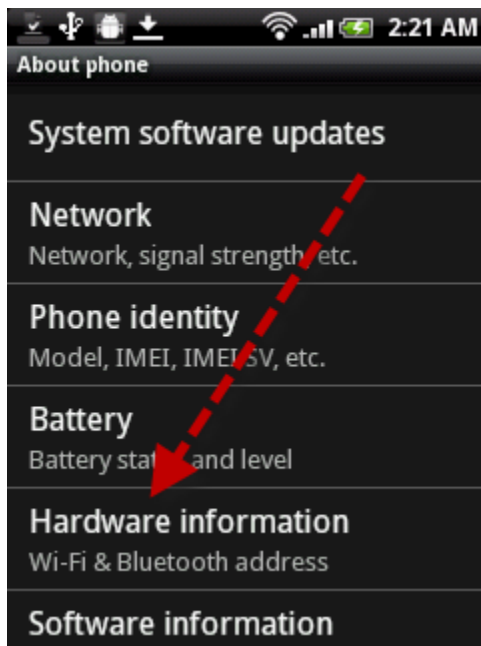
- a. Open **Menu**.



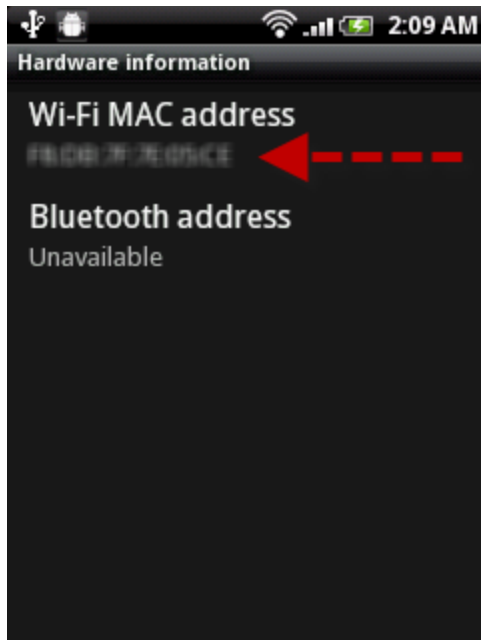
- b. Then go to **Settings**.



c. Then **About Phone**.



d. Then click on **Hardware information**.



e. And there you will see your phone's MAC Address below the heading **Wi-Fi MAC address**.

2. Android Tablets (Motorola Xoom) -

<http://www.trickyways.com/2011/03/find-motorola-xoom-mac-address/>

a. Tap **Apps** from the home screen.



b. Tap **Settings** icon.



c. Tap **About** → **Status**.

d. Scroll and see the Wi-Fi MAC address.



3. Apple iPad, iPhone, and iPod - <http://www-dcn.fnal.gov/DCG-Docs/mac/iPhone.html>
- a. On the **Home Screen**, tap the **Settings** icon.



- b. Select **General** option from left side.



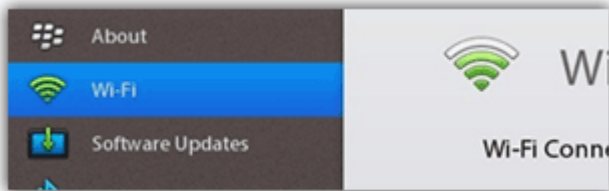
- c. Select the **About** option on the right side. It will show lots of details including **Wi-Fi Address** and **Bluetooth** (see highlighted in above screenshot).

4. Blackberry Playbook - <http://www.trickyways.com/2011/05/how-to-find-wireless-mac-address-on-blackberry-playbook/>

a. On PlayBook **Home Screen**, tap **Settings** icon on status bar.



b. Tap **Wi-Fi** on the left menu.



c. At the bottom of the screen, tap Wi-Fi symbol icon with "?" mark on it.



d. Here you can find MAC address named as Physical Address.



5. Kindle - <http://buzzintechology.com/2010/03/how-to-find-mac-addressphysical-address-on-windows/>
 - a. Go to **Settings** page in your Kindle, by pressing the Menu button from Home screen.
 - b. Use the Kindle's 5-way controller to underline **Settings** and press. You will see multiple pages of personalization settings to customize your Kindle experience.
 - c. Look for **Device Info** to get your Kindle's Wi-Fi Mac address.

6. Nook and Nook Color - <http://img1.imagesbn.com/PImages/nook/2/mediakit/userguide NOOK 11060 1.pdf>
 - a. Go to **Settings** → **Device Info** → **About your Nook**.
 - b. It is the last setting on the page.

7. Palm Tungsten C - http://tis.nyspi.org/PDF/mac_finding.pdf
 - a. From the Home screen, tap **Prefs**.
 - b. Under Communication, tap **Wi-Fi**.
 - c. At the bottom of the Wi-Fi Preferences screen, tap **Info**.
 - d. You'll find the MAC address of the device listed on the third line of the screen.

8. Sony Clie - http://tis.nyspi.org/PDF/mac_finding.pdf
 - a. Go to the **System Preferences (Prefs)**.
 - b. Choose **Network** from the pull-down menu, then select the **Details...** button.
 - c. Press the **Menu** pull-down button and select **Connection Status**. The MAC address is listed.

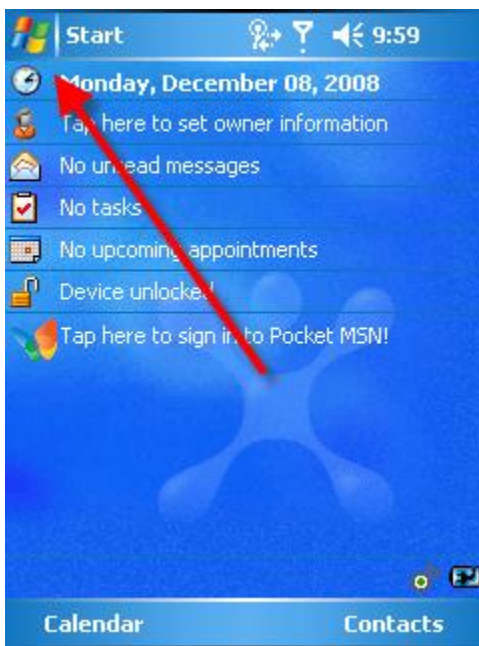
9. Windows Mobile 7 Devices - <http://www.technipages.com/samsung-omnia-7-obtain-mac-address.html>
 - a. Open the **Phone** app.
 - b. Bring up the dial pad.
 - c. Dial **##634#** and tap **Call**.
 - d. From the Diagnostics screen, dial ***#1234#**
 - e. The Wi-Fi MAC Address is displayed at the bottom of the screen.

10. Windows Mobile 6.5 Devices - <http://answers.microsoft.com/en-us/winphone/forum/wp6n-wptips/how-do-i-find-mac-address-in-win-mobile-65/8efccc60-e05b-44d3-9f44-09be9952d9ac>
 - a. Settings -> Advanced Settings (Top-right big tab in settings menu) -> System -> Version -> Device
 - b. Scroll down to Wi-Fi (IEEE 202.11 b/g) under MAC

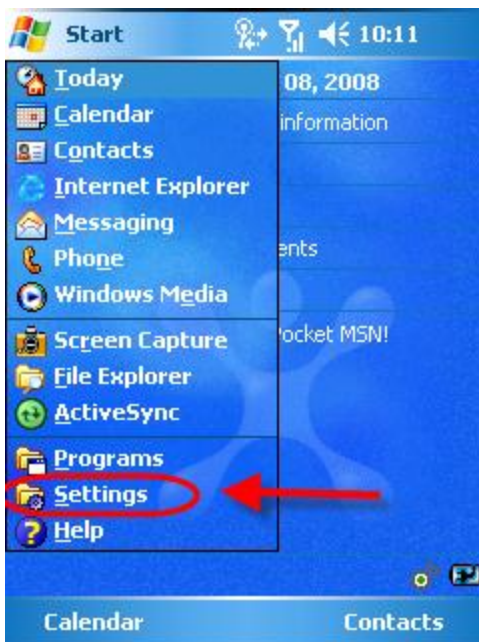
11. Windows Mobile 5 Devices -

<http://wiki.uky.edu/network/Wiki%20Pages/Finding%20your%20Mac%20Address%20on%20a%20Windows%20Mobile%205.0%20device.aspx>

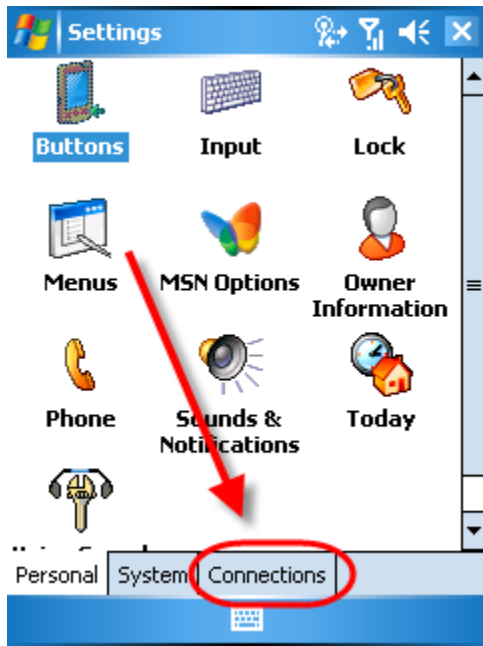
- a. Click on your Windows mobile Start button.



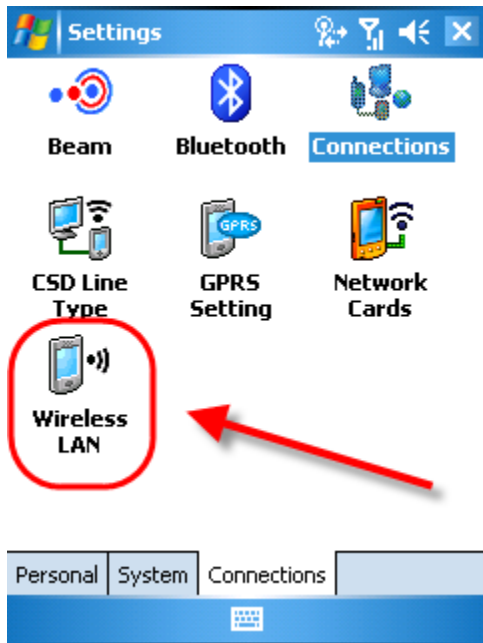
- b. On your Start Menu, click on the settings menu



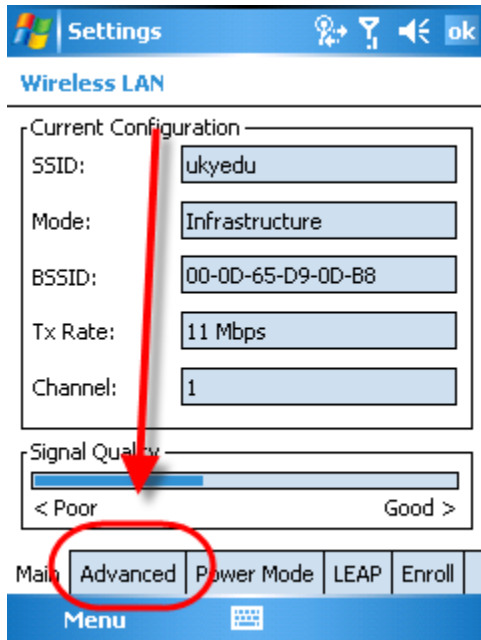
c. In the settings window enter, click on the connections tab.



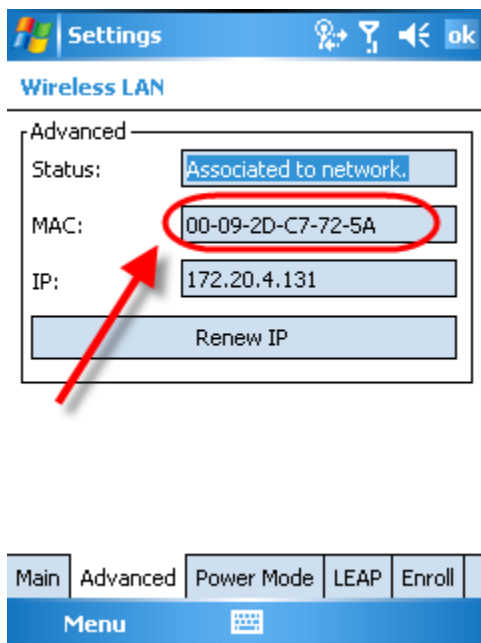
d. On the connections tab click on the Wireless LAN icon.



- e. On the Wireless LAN screen click on the 'Advanced' tab to display additional information.



- f. From the information displayed, locate where it says 'MAC Address'.



12. **Windows Mobile 2003 or PocketPC 2002 -**

http://tis.nyspi.org/PDF/mac_finding.pdf

- a. From the Start Menu, tap **Settings**, then the **System** tab.
- b. Locate and tap the icon that either lists your PDA's hardware components or manages the wireless network component.
- c. **Note:** On the Toshiba e750 series, click **Wireless LAN Manager**. On the Dell Axim, click **Dell WLAN Utility** (it is on the **Connections** tab, not the **System** tab). On a Hewlett-Packard HP) iPaq, tap **Asset Viewer**.
- d. Locate the setting, tab, or dialog box that reveals the MAC address:
 - i. **Toshiba e Series PocketPC:** In the Wireless LAN Manager, select **Info**. You'll find the MAC address listed at the top of this screen.
 - ii. **Dell Axim:** For the X30 models, in the Dell WLAN Utility, select **Advanced**. Then, tap **Network Troubleshooting**, and then **Advanced**. For the X3i models, in the Dell WLAN Utility under "Station IP Info", tap **More Info**. The MAC address is one of the bottom two items.
 - iii. **HP iPaq:** In the Asset Viewer, tap **+**(the plus sign) next to "Wireless LAN". The MAC address will be one of the details listed.

13. Zune HD

- a. **Settings.**
- b. Select **Wireless.**
- c. Select **Information.**